

8-Channel Image Reconstruction with Independent Component Analysis

Frederick J. Frigo, Bryan J. Mock, James A. Heinen*, Charles R. Giordano

GE Medical Systems, Milwaukee WI, USA; * Marquette University, Milwaukee, WI, USA

Abstract

Image reconstruction using 8-channels for data acquisition is desirable since it improves image quality due to increased signal-to-noise. One drawback to multiple channel image reconstruction is image intensity variations. These variations stem from near-field effects and coil-to-coil coupling. Independent Component Analysis (ICA) is a technique used to separate mixed signals. ICA can be used on the images from each channel to quantify image intensity variations and correct them in the original image.

Introduction

Conventional multi-coil image reconstruction techniques involve creating an image from each channel and then combining these images in some fashion, usually by a weighted sum of the squares approach.(1) The resulting combined image often exhibits intensity variations based on the proximity of tissue to individual coil elements. Coil coupling effects can also be observed by close examination of the individual images from each channel.

Independent Component Analysis (ICA) has been used in fMRI and DTI to relate interesting signals from noise.(2) Another application of ICA explored in this study relates to multi-channel image reconstruction. ICA can be used to process the individual images from each channel and the combined image. The resulting component images are representative of the contributions of each coil, and of particular interest, a single component image results from the combination process itself when the combined image is provided as an input to ICA. The ICA results can be used to provide a weighting map that can be applied to the original combined image, improving image quality by reducing image intensity variation.

Methods

All data were acquired using a General Electric 1.5T MR scanner equipped with an high bandwidth (+/- 250 kHz), 8-channel data acquisition system, 22 mT/m gradients running at a maximum slew rate of 120 T/m/s, using a convention 2D Gradient Recalled Echo (GRE) imaging sequence. An 8-channel domed head coil (MRI Devices) was used to collect data. Data were acquired using the maximum gradient strength (22 mT/m) with the following parameters: 5 mm thick, axial slice locations (1 mm gap), +/-15 kHz RBW, 256x256 matrix, and 24 cm FOV.

The intermediate images from each coil were saved, along with the combined image. The ICA algorithm used was Hyvärinen's algorithm(3), which estimates the independent components from given set of multidimensional signals.

Results

Figure 1 shows a conventional 8 channel combined image with no image intensity correction and center shading. Since the coils are located in a constellation surrounding the head, image pixel intensity is greater in regions in regions closer to the periphery hence the center of the image appears darker. Figure 2 shows an image intensity

correction map generated from the results of ICA. Figure 3 shows the application of the image intensity map to the original image shown in Figure 1 to reduce center shading with minimal noise amplification.

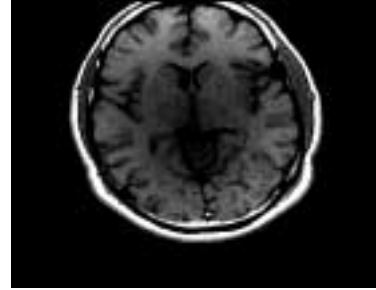


Figure 1. Conventional 8-channel image.

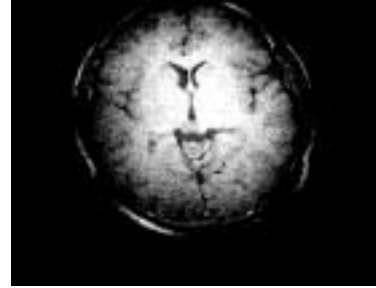


Figure 2. Image intensity correction map generated with ICA.



Figure 3. Corrected 8-channel image with reduced center shading.

Discussion & Conclusion

We have demonstrated that ICA can be used to separate images from individual coil elements, and to characterize the image combination process. The resulting components can be used to perform image intensity correction on the combined image. The corrected images show increased image intensity in regions farther away from the coil elements, thereby reducing image intensity variation and improving image quality.

References

1. Roemer et al., MRM, vol .30, pp. 145-142, 1990.
2. Arfanakis, K, et al., "Independent Component Analysis applied to Diffusion Tensor MRI", ISMRM, 2001.
3. Hyvärinen, A, et al., "Independent Component Analysis : algorithms and applications", *Neural Networks*, vol. 13, no.4-5, pp. 411-430, 2000.